



MatthewJames

St James House | St James Road | Surbiton | Surrey KT6 4QH

T: +44 (0) 20 8390 2266

E: [enquiries@matthewjamesestateagents.co.uk](mailto:enquiries@matthewjamesestateagents.co.uk)

[www.matthewjamesestateagents.co.uk](http://www.matthewjamesestateagents.co.uk)



## Portsmouth Road, Surbiton, KT6 4FD

## TO LET

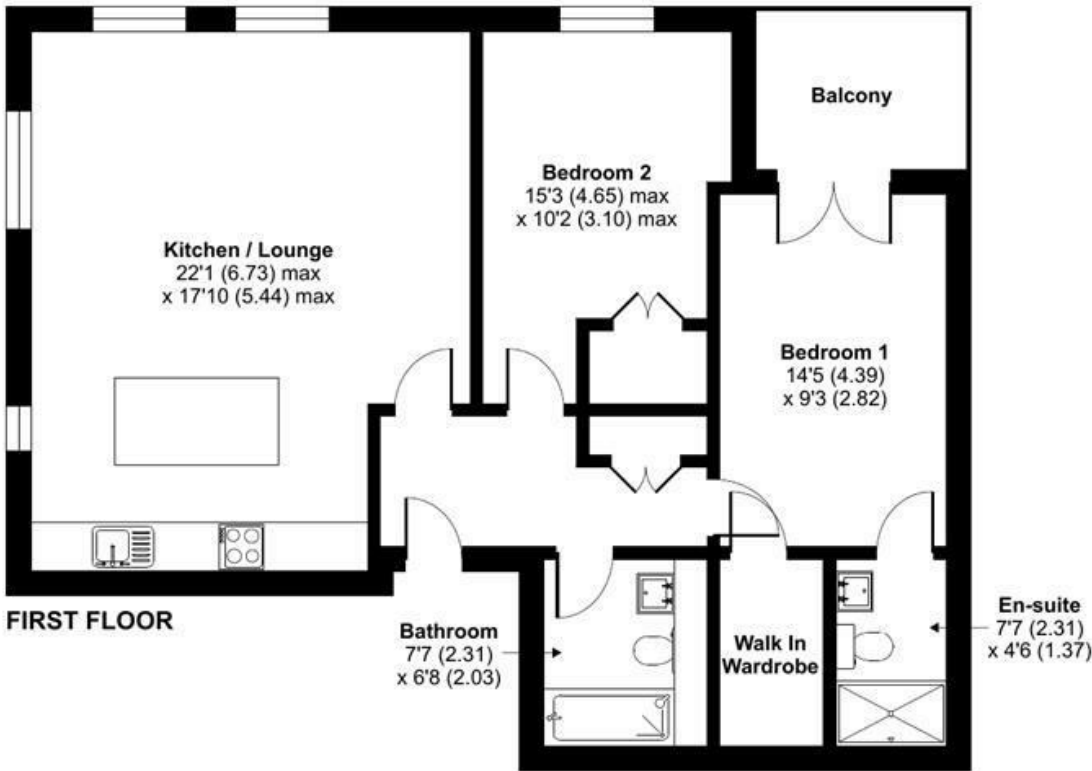
A very well presented two double bedroom, two bathroom apartment in this modern development located only a short walk from the heart of Surbiton and the amenities of the River. The accommodation, which has been finished to a high standard comprises; entrance hall, reception with modern open plan kitchen, main bedroom with en-suite shower room, walk in wardrobe and private balcony, second double bedroom and family bathroom. The property benefits from under floor heating, double glazing and private parking space, is offered unfurnished and is available immediately. Council Tax Band D

**£2,250 Per Calendar Month per calendar month (other fees may apply)**

**EPC Rating: B**

Portsmouth Road, Surbiton, KT6

Approximate Area = 871 sq ft / 81 sq m  
For identification only - Not to scale



Floor plan produced in accordance with RICS Property Measurement 2nd Edition, Incorporating International Property Measurement Standards (IPMS2 Residential). © n°checon 2025. Produced for Matthew James. REF: 1254656

These sales particulars have been prepared as a general guide only. We have not carried out a detailed survey, tested the services, appliances or specific fittings. Your solicitor must confirm lease or freehold details. Carpets, curtains, gas fires, electrical goods/fittings or other fixtures, unless expressly mentioned, are not included in the sale of this property. If there are any important matter which are likely to affect your decision to buy, please contact this office and we will be pleased to check the information for you before viewing the property. Before this property can be removed from the market , all offer.; must be checked by our Financial Services Department. This is a service we offer on behalf of our clients. Please note that our room sizes are quoted in metres to the nearest tenth of a meter on a wall-to-wall basis. The imperial equivalent is only intended as an approximate guide for those not fully conversant with the metric measurements. All measurements have been taken using a sonic tape measure and therefore may be subject to a small margin of error.

Energy Efficiency Rating		
	Current	Potential
Very energy efficient - lower running costs		
(92 plus) <b>A</b>		
(81-91) <b>B</b>		
(69-80) <b>C</b>		
(55-68) <b>D</b>		
(39-54) <b>E</b>		
(21-38) <b>F</b>		
(1-20) <b>G</b>		
Not energy efficient - higher running costs		
<b>86</b>	<b>86</b>	
England & Wales		
EU Directive 2002/91/EC		

Environmental Impact (CO <sub>2</sub> ) Rating		
	Current	Potential
Very environmentally friendly - lower CO <sub>2</sub> emissions		
(92 plus) <b>A</b>		
(81-91) <b>B</b>		
(69-80) <b>C</b>		
(55-68) <b>D</b>		
(39-54) <b>E</b>		
(21-38) <b>F</b>		
(1-20) <b>G</b>		
Not environmentally friendly - higher CO <sub>2</sub> emissions		
England & Wales		
EU Directive 2002/91/EC		